



LESOTHO GENERAL CERTIFICATE OF SECONDARY EDUCATION

Kingdom of Lesotho
Ministry of Education and Training

CANDIDATE
NAME

CENTRE
NUMBER

--	--	--	--	--

CANDIDATE
NUMBER

--	--	--	--	--	--	--	--	--	--

FASHION AND TEXTILES

0191/01

October/November 2018

Paper 1

2 hours

Candidates answer on the Question Paper.

Additional Materials: Coloured pencils (not yellow)
Ruler
Small piece of fabric, needle and thread
Soft pencil (HB)

INSTRUCTIONS AND INFORMATION TO THE CANDIDATES.

Write your Name, Centre Number and Candidate Number on all the work you hand in.
Write in dark blue or black pen.
You may use a soft pencil (HB) for any sketches and drawings or rough working.
Do not use staples, paper clips, glue or correction fluid.

You should illustrate your answer by means of clear, bold and labelled diagrams wherever possible. You may use a needle and thread and a small piece of fabric to help in making drawings of stitches. The fabric should not be handed in with your work.

SECTION A

Answer **all** parts of Question 1 in the spaces provided on the paper.
You are advised to spend no longer than 40 minutes on Section A.

SECTION B

Answer any **three** questions in the spaces provided on the question paper.
Enter the numbers of the Section B questions you have answered in the grid on this page.

The number of marks is given in brackets [] at the end of each question or part question.

For Examiner's use	
Section A	
Section B	
Total	

This document consists of 19 printed pages



SECTION A
ANSWER ALL QUESTIONS

1 Fig. 1 is a photograph of a traditional Basotho garment for females.



Fig. 1

(a) (i) Identify the traditional garment in Fig. 1.

..... [1]

(ii) Identify the traditional fibre used to make the garment in Fig. 1.

..... [1]

(b) The indigenous fibre is becoming scarce.

(i) Identify **two** different fibres that might be used to make the garment in Fig. 1.

1.....

2.....

[2]

(ii) Identify **two** components used to embellish the garment in Fig. 1.

1.....

2.....

[2]

(c) Discuss the traditional garment in Fig. 1 in relation to (i) modesty and (ii) protection.

(i) Modesty,

.....
.....
.....
.....
.....
.....
.....
.....
.....[4]

(ii) Protection.

.....
.....
.....
.....
.....
.....
.....
.....
..... [4]

(d) Identify **two** traditional Lesotho garments for males. State the materials used to make the garments.

1.....
material.....
2.....
material..... [2]

(g) Most traditional garments were not lined.

(i) State **four** reasons for lining garments.

.....
.....
.....
.....
.....
.....
..... [4]

(ii) Discuss the difference between **two** main types of interfacings. Give one example of each type of interfacing.

.....
.....
.....
.....
.....
.....
.....
.....
.....
.....
.....
.....
..... [6]

(h) State guidelines to follow when laying out patterns on fabrics with nap.

.....

.....

.....

.....

.....

.....

.....

.....

..... [4]

SECTION B

Answer **three** questions from this section

- 2 Fig. 2 is a photograph of a fabric used to make a winter jacket.






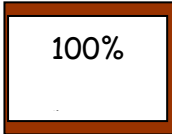
Fig. 2

- (a) Identify the fabric in Fig. 2 that could be used for a winter jacket.

..... [1]

- (b) Labels on the winter jacket give information to the consumer.

Complete the table below by giving the meaning of each symbol.

Symbol	Meaning of symbol





[4]

- (c) Sketch a design to be machine embroidered on a winter jacket, using a combination of three different colours and three stitches.

Indicate the position of design on the jacket,

[5]

- (d) The jacket needs to be pressed after washing.
Explain how to press a **corduroy** jacket after it has been washed.

.....

.....

.....

.....

.....

.....

.....

.....

.....

.....

.....

.....

..... [6]

(e) State the points to consider when storing a steam iron after using it

.....
.....
.....
.....
.....
.....
.....
..... [4]

3 Fig. 4 is a picture of a two piece overall worn when using textile dyes in a factory.



Fig. 4

(a) (i) Give **one** reason for wearing the overall in Fig. 4 when dyeing textiles.

..... [1]

(c) Identify **three** fasteners to use on the overall in Fig.4. State where each fastener will be applied on the overall and give a reason for each choice of fastener.

Fastener 1.....
.....
.....
.....

Fastener 2.....
.....
.....
.....

Fastener 3.....
.....
.....
..... [6]

(d) Fig. 5 is a pattern pieces for the front part of the overall.

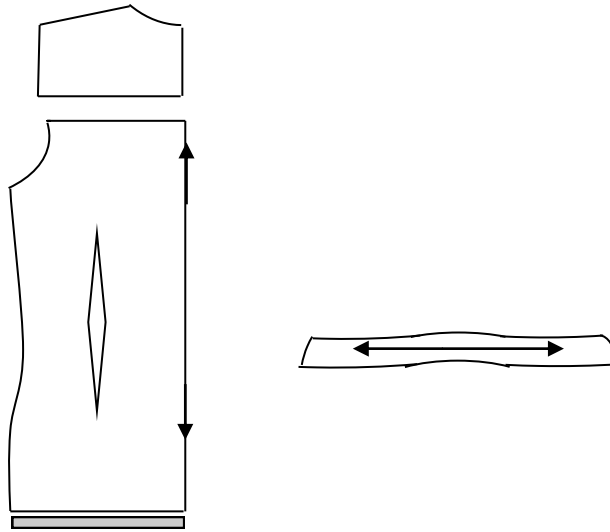
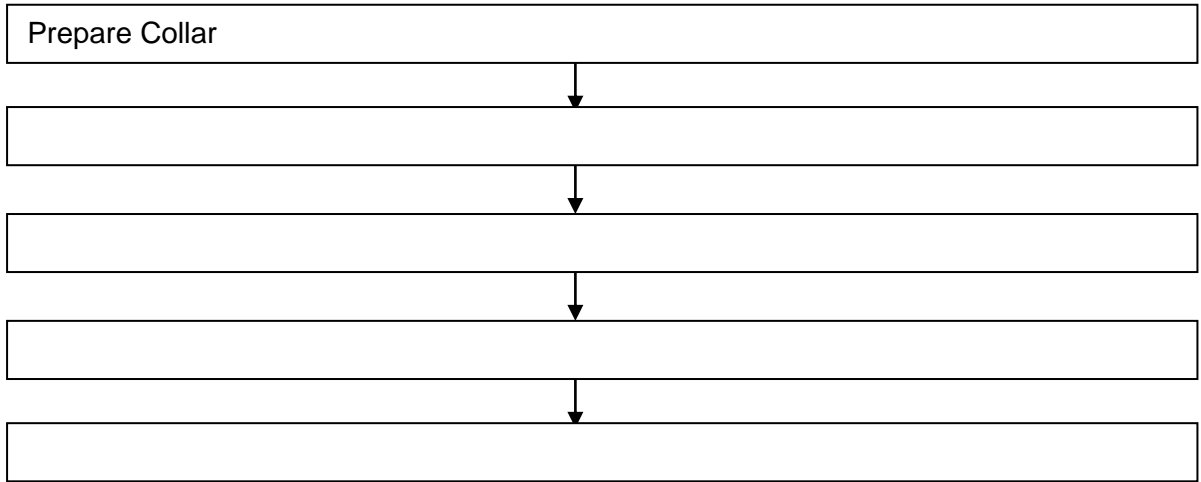


Fig. 5

(i) Explain the meaning of each symbol on the pattern piece in Fig. 5.

- 1.....
-
- 2.....
-
- 3.....
- [4]

- (b) (ii) The overall top in Fig. 5 is made up of a back, front, sleeves and collar.
Explain how you would assemble the top of the overalls in Fig. 5.



- 4 Fig. 6 is a dress bought from a department store.



Fig. 6

- (a) (i) Name the art element shown on the dress.

.....[1]

- (ii) Name **two** ways to finish the neck edge of the above style in figure 2.

.....
..... [1]

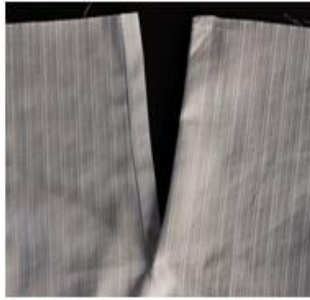
(b) Describe the effect of the element on the wearer's figure.

.....
.....
.....
..... [2]

(c) Discuss the **three** factors that influence the choice of clothes for teenagers.

.....
.....
.....
.....
.....
.....
.....
.....
.....
.....
.....
.....
.....
.....
.....
.....
.....
.....
.....
..... [6]

5 Openings are necessary to facilitate dressing and undressing.



(a) (i) Name the illustrated openings that are commonly used in garments.

.....
.....
..... [3]

(b) State **four** factors to consider when constructing openings.

.....
.....
.....
.....
.....
.....
.....
..... [4]

(c) (i) Suggest **one** way to embellish the faced opening.
Give a reason for your choice.

.....
.....
.....
..... [2]

(ii) Explain step by step how to work the faced opening. Use sketches for explanation.

[9]

(d) Recycling materials is recommended, explain how the scraps or remnants of fabrics can be recycled.

.....

.....

.....

..... [2]

6 (a) List the basic types of sleeves.

.....
.....
..... [3]

(b) Describe each type of sleeve named above.

.....
.....
.....
.....
.....
..... [3]

(c) State different methods of finishing bottom of sleeve edges.

.....
.....
.....
.....
.....
.....
.....
..... [4]

(d) Describe the alterations which can be made on the sleeve pattern.

.....
.....
.....
.....
.....
.....
.....
.....
..... [4]

(e) Using labelled diagrams, explain how to insert a puffed sleeve on a poly cotton dress.

.....
.....
.....
.....
.....
.....
.....
.....
.....
.....
.....
.....
..... [6]

Permission to reproduce items where third-party owned material protected by copyright is included has been sought and cleared where possible. Every reasonable effort has been made by the publisher (ECoL) to trace copyright holders, but if any items requiring clearance have unwittingly been included, the publisher will be pleased to make amends at the earliest possible opportunity.